

DETAIL A
SCALE 1 : 3

WHEEL ASSEMBLY:

Solid Wheel Offset Hub - Assemble axle to truck base. Connect wheel directly to 1/2" axle allow 10mm clearance of shaft protruding from wheel. Assemble tooth lock retaining washer to shaft - will require hammer and steel tube tool supplied. Assemble final tooth lock washer to opposite wheel.

Solid Wheel Symetrical Hub - Assemble axle to truck base. Prior to connecting the wheel, slide wheel spacer onto axle and complete assembly as described above. Wheel spacer supplied with assembly kit.

265mm Foam Filled Wheel - Assemble axle to truck base. Insert bearing sleeve into wheel hub/bearing assembly and complete assembly as described above. Wheel bearing sleeve supplied with assembly kit.

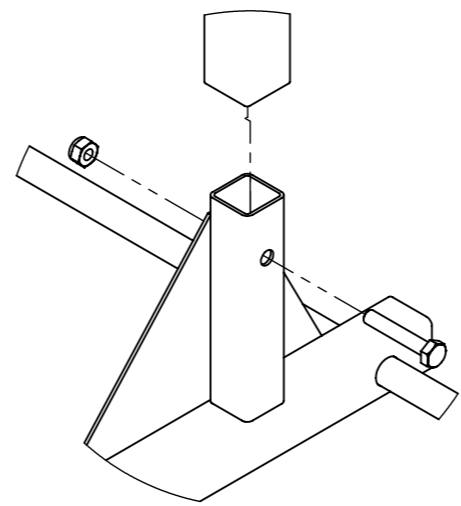
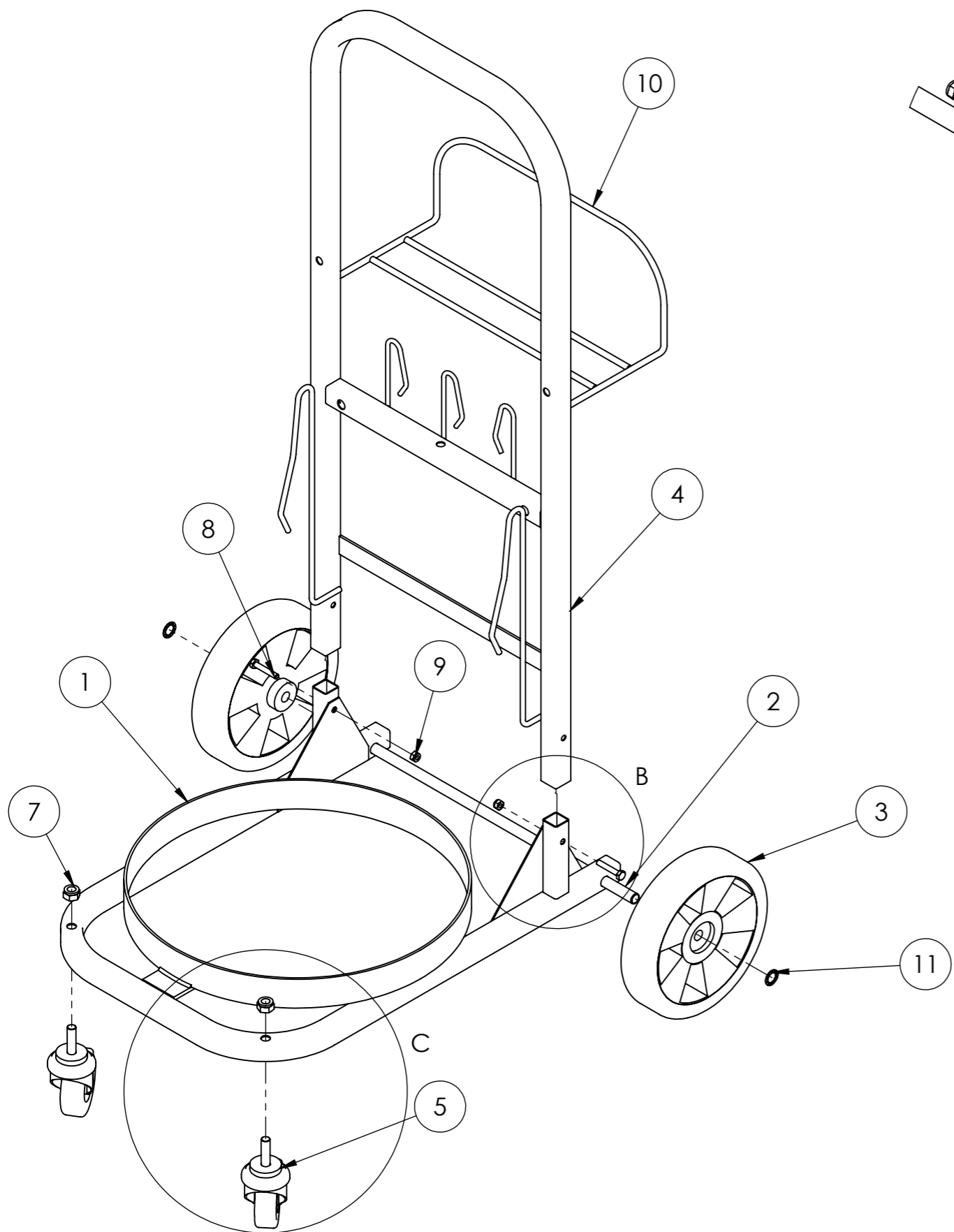
| ITEM NO. | PART NUMBER | DESCRIPTION | QTY. |
|----------|--|-------------------------------------|------|
| 1 | HIL-P4120-030-A | TRUCK BASE | 1 |
| 2 | HIL-P4120-010-A | TRUCK AXLE | 1 |
| 3 | HIL-P6400-010-A | WHEEL - 75MM | 2 |
| 4 | HIL-P4120-020-A | TRUCK HANDLE | 1 |
| 5 | HIL-P6110-050-A | FRONT CASTOR WHEEL | 2 |
| 6 | HIL-P6110-080-A | BOLT - M10 X 50MM | 2 |
| 7 | HIL-P6120-040-A | NUT - 10MM NYLOK | 2 |
| 8 | HIL-P6130-040-A | SCREW - 6MM X 35MM HEX SET SCREW ZP | 2 |
| 9 | HIL-P6120-020-A | NUT - 6MM NYLOK | 2 |
| 10 | HIL-P4620-050-A | HOSE HOLDER - 10M | 1 |
| 11 | B18.21.2M-Internal Tooth Lock Washers_AM12 | Tooth Lock Wheel Retaining washer | 2 |

| | | | | | | |
|---|---------------------------|--------------|-----------------------------------|----------------------|--|---|
| UNLESS OTHERWISE SPECIFIED: DIMENSIONS ARE IN MILLIMETERS SURFACE FINISH: TOLERANCES: LINEAR: ANGULAR: | FINISH: | | DEBUR AND BREAK SHARP EDGES | DO NOT SCALE DRAWING | REVISION | A |
| | THIRD ANGLE PROJECTION | Assy Dwg No. | | Position No. | TITLE: [DE] Truck Trolley Assembly Proceedure | |
| Drawn by DG | Date 16/08/18 | MATERIAL: | | DWG NO. | A3 | |
| Approved | | WEIGHT: | SCALE:1:20 | SHEET 1 OF 2 | | |

Copyright
THIS DRAWING IS THE PROPERTY OF HILTON PRODUCTS NZ LTD
AND ITS INFORMATION IS COPYRIGHT AND CONFIDENTIAL.
IT MUST NOT BE PASSED TO A THIRD PERSON OR COPIES TAKEN.



HILTON PRODUCTS NZ LTD
PO Box 11-168 Ellerslie, Auckland, New Zealand
Phone: +64 9 579 1117 Mob: +64 21 313 885

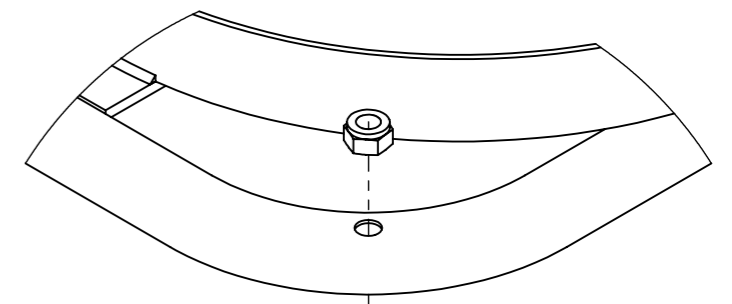


Truck Handle Assembly: Detail B

Align Truck Handle and base as shown. Slide Handle onto Truck base mounting tube until bolt holes align. If tight, use a rubber mallet to gently tap into place

Insert 6mm x 35mm hex head screw as shown from the outside of the trolley handle. Connect 6mm lock nut and tighten with spanner.

DETAIL B
SCALE 1 : 3



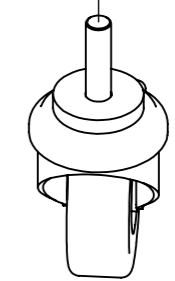
Truck Base Front Wheel Assembly: Detail C

If Front wheel assembly supplied seperately. Dissassemble Castor wheel and insert M10 x 60 Hex bolt as shown.

Insert into Truck base and connect M10 Lock Nut and tighten.

Re-assemble castor wheel.

DETAIL C
SCALE 1 : 3



| | | | | | | | |
|---|--------------|-----------|-----------------------------------|--|--------|--------------|---|
| UNLESS OTHERWISE SPECIFIED: DIMENSIONS ARE IN MILLIMETERS SURFACE FINISH: TOLERANCES: LINEAR: ANGULAR: | FINISH: | | DEBUR AND BREAK SHARP EDGES | DO NOT SCALE DRAWING | | REVISION | A |
| | Assy Dwg No. | | | Position No. | TITLE: | | |
| THIRD ANGLE PROJECTION | | | | [DE] Truck Trolley Assembly Proceedure | | | |
| Drawn by | Date | MATERIAL: | | DWG NO. | | A3 | |
| DG | 16/08/18 | | | | | | |
| Approved | | WEIGHT: | | SCALE:1:20 | | SHEET 2 OF 2 | |
| | | | | | | | |

Copyright
THIS DRAWING IS THE PROPERTY OF HILTON PRODUCTS NZ LTD
AND ITS INFORMATION IS COPYRIGHT AND CONFIDENTIAL.
IT MUST NOT BE PASSED TO A THIRD PERSON OR COPIES TAKEN.



HILTON PRODUCTS NZ LTD
PO Box 11-168 Ellerslie, Auckland, New Zealand
Phone: +64 9 579 1117 Mob: +64 21 313 885